

### Only Morris Rechiller have **Severe Temperature Protection** - Prevent Tube Leaks -

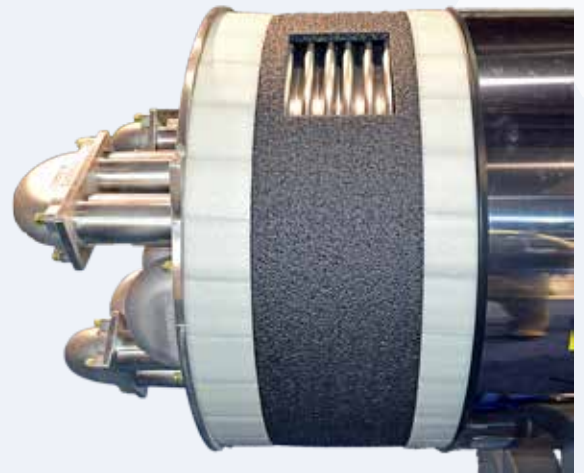
- **Quik Chill™** HMI touchscreen controls allow for easy operation
- Severe Temperature Service (STS) eliminates tube cracking and damage from thermal expansion
- U-bends facilitate full inspection and cleaning of all surfaces
- Refrigerant injectors eliminate the need for high-maintenance and operational cost of ammonia pumps
- Maintains highest water flow in the industry for more water exchange in the chiller
- Modulating pressure regulator controlled by microprocessor ensures precise temperature control
- Optional remote communications and diagnostics package puts 24/7 service and support at your fingertips
- Guaranteed 32.5°F water temperature leaving rechiller
- All food-grade stainless steel frame, jacketing, process tubing, U- bends and tube sheets
- ASME certified manufacturing for highest level of quality control



Model Number (R-717)	Nominal* Refrigeration Capacity at 20°F	L	W	H	Approximate Shipping Weight
WRC-RA-5014	80 TR	16.0'	3.3'	6.5'	4,100 lb
WRC-RA-5020	120 TR	22.0'	3.3'	6.5'	6,200 lb
WRC-RA-5026	160 TR	27.0'	3.3'	6.5'	7,900 lb
WRC-RA-5032	200 TR	34.0'	3.3'	6.5'	8,500 lb
WRC-RA-6027	250 TR	29.0'	4.1'	7.9'	9,200 lb
WRC-RA-6032	300 TR	34.5'	4.1'	7.9'	11,040 lb

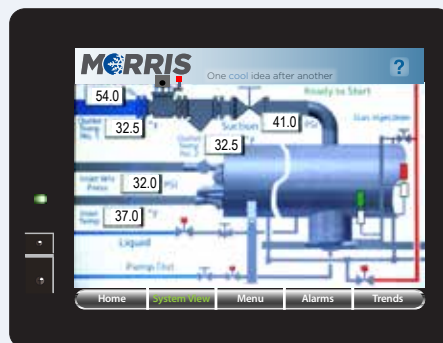
\* 20 °F at the evaporator.  
Estimate a 5 psi drop to  
compressor.  
Note: Morris & Associates  
reserves the right to change  
dimensions and specifications  
without notice. Contact  
factory for exact specifications.

**STS - Severe Temperature Service** protects the rechiller from damage due to thermal expansion. When hot water is used to clean the heat exchanger, tremendous stress can be generated in the metal due to thermal expansion. This stress occurs because the tubes inside the equipment expand as they are heated by the CIP solution while the shell is not heated and therefore does not expand. The STS design allows the tubes to grow by expanding the bellows in the shell without creating high stress. Morris & Associates WRC models are the only rechillers on the market to feature STS protection.



### About **Quik Chill™** Controls

- Create up to 10 unique user log-ins
- Receive pop-up service notifications
- Record services performed for later review
- Easily clear and review system alarms
- Monitor cycle status, water temps and more from home page



**MORRIS**

803 Morris Drive  
Garner, NC 27529  
919.582.9200

[morris-associates.com](http://morris-associates.com)

P/N: 8090-0028-00 Rev. 20170816