

### Only Morris Rechillers have **Severe Temperature Protection** - Prevent Tube Leaks -

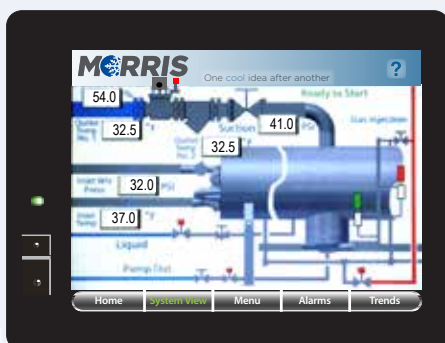
- **Quik Chill™** HMI touchscreen controls allow for easy operation
- Severe Temperature Service (STS) eliminates tube cracking and damage from thermal expansion
- U-bends facilitate full inspection and cleaning of all surfaces
- Refrigerant injectors eliminate the need for high-maintenance and operational cost of ammonia pumps
- Maintains highest water flow in the industry for more water exchange in the chiller
- Modulating pressure regulator controlled by microprocessor ensures precise temperature control
- Optional remote communications and diagnostics package puts 24/7 service and support at your fingertips
- Guaranteed 32.5°F water temperature leaving rechiller
- All food-grade stainless steel frame, jacketing, process tubing, U- bends and tube sheets
- ASME certified manufacturing for highest level of quality control



Model Number (R-717)	Refrigeration Capacity at -6.7°C (kW)	L (m)	W (m)	H (m)	Approx. Shipping Weight (kg)
WRC-RA-5014	282	4.9	1.0	2.0	1,864
WRC-RA-5020	422	6.7	1.0	2.0	2,818
WRC-RA-5026	563	8.2	1.0	2.0	3,591
WRC-RA-5032	704	10.4	1.0	2.0	3,864
WRC-RA-6027	880	8.8	1.3	2.4	4,182
WRC-RA-6032	1056	10.5	1.3	2.4	5,018
<b>(R-507)</b>					
WRC-R5-5014	225	4.9	1.0	2.0	1,864
WRC-R5-5020	338	6.7	1.0	2.0	2,818
WRC-R5-5026	451	8.2	1.0	2.0	3,591
WRC-R5-5032	563	10.4	1.0	2.0	3,864
WRC-R5-6027	704	8.8	1.3	2.4	4,182
WRC-R5-6032	845	10.5	1.3	2.4	5,018

\* -6.7 °C at the evaporator.  
Estimate a 0.034 MPa drop to compressor.  
Note: Morris & Associates reserves the right to change dimensions an specifications without notice.  
Contact factory for exact specifications.

**STS - Severe Temperature Service** protects the rechiller from damage due to thermal expansion. When hot water is used to clean the heat exchanger, tremendous stress can be generated in the metal due to thermal expansion. This stress occurs because the tubes inside the equipment expand as they are heated by the CIP solution while the shell is not heated and therefore does not expand. The STS design allows the tubes to grow by expanding the bellows in the shell without creating high stress. Morris & Associates WRC models are the only rechillers on the market to feature STS protection.



**QuikChill™** with Easy Navigation

### About **Quik Chill™** Controls

- Create up to 10 unique user log-ins
- Receive pop-up service notifications
- Record services performed for later review
- Easily clear and review system alarms
- Monitor cycle status, water temps and more from home page