

### Only Morris Rechiller have **Severe Temperature Protection** - Prevent Tube Leaks -

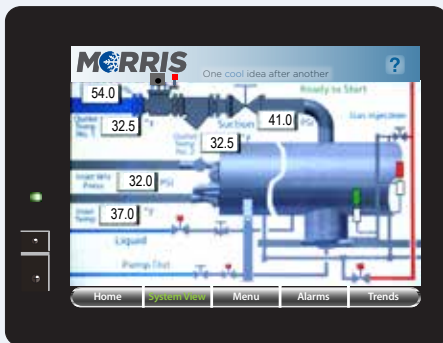
- **QuikChill™** Touchscreen. Controls for easy operation
- Severe Temperature Service (STS) eliminates tube cracking and damage from thermal expansion
- U-bends facilitate full inspection and cleaning of all surfaces
- All food-grade stainless steel frame, jacketing, process tubing, U- bends and tube sheets
- Highest water flow in the industry for more water exchange in the chiller
- Modulating pressure regulator controlled by microprocessor ensures precise temperature control
- Guaranteed 32.5°F water temperature leaving rechiller
- Optional remote communications and diagnostics package puts **Morris Certified Technicians** at your fingertips
- ASME certified manufacturing for highest level of quality control
- Refrigerant injectors eliminate the need for high-maintenance ammonia pumps



Model Number (R-507)	Refrigeration Capacity at 20°F*	L	W	H	Approximate Shipping Weight
WRC-RF-5014	64 tons	16.0'	3.3'	6.5'	4,600 lb
WRC-RF-5020	96 tons	22.0'	3.3'	6.5'	6,700 lb
WRC-RF-5026	128 tons	27.0'	3.3'	6.5'	8,400 lb
WRC-RF-5032	160 tons	34.0'	3.3'	6.5'	9,000 lb
WRC-RF-6027	200 tons	29.0'	4.1'	7.9'	9,700 lb
WRC-RF-6032	240 tons	34.5'	4.1'	7.9'	11,540 lb

\* 20 °F at the evaporator.  
Estimate a 5 psi drop to  
compressor.  
Note: Morris & Associates  
reserves the right to change  
dimensions an  
specifications without  
notice.  
Contact factory for exact  
specifications.

**STS - Severe Temperature Service** protects the rechiller from damage due to thermal expansion. When hot water is used to clean the heat exchanger, tremendous stress can be generated in the metal due to thermal expansion. This stress occurs because the tubes inside the equipment expand as they are heated by the CIP solution while the shell is not heated and therefore does not expand. The STS design allows the tubes to grow by expanding the bellows in the shell without creating high stress. Morris & Associates WRC models are the only rechillers on the market to feature STS protection.



**QuikChill™** with  
Easy Navigation

### About Quik Chill™ Controls

- Create up to 10 unique user log-ins
- Receive pop-up service notifications
- Record services performed for later review
- Easily clear and review system alarms
- Monitor cycle status, water temps and more from home page

