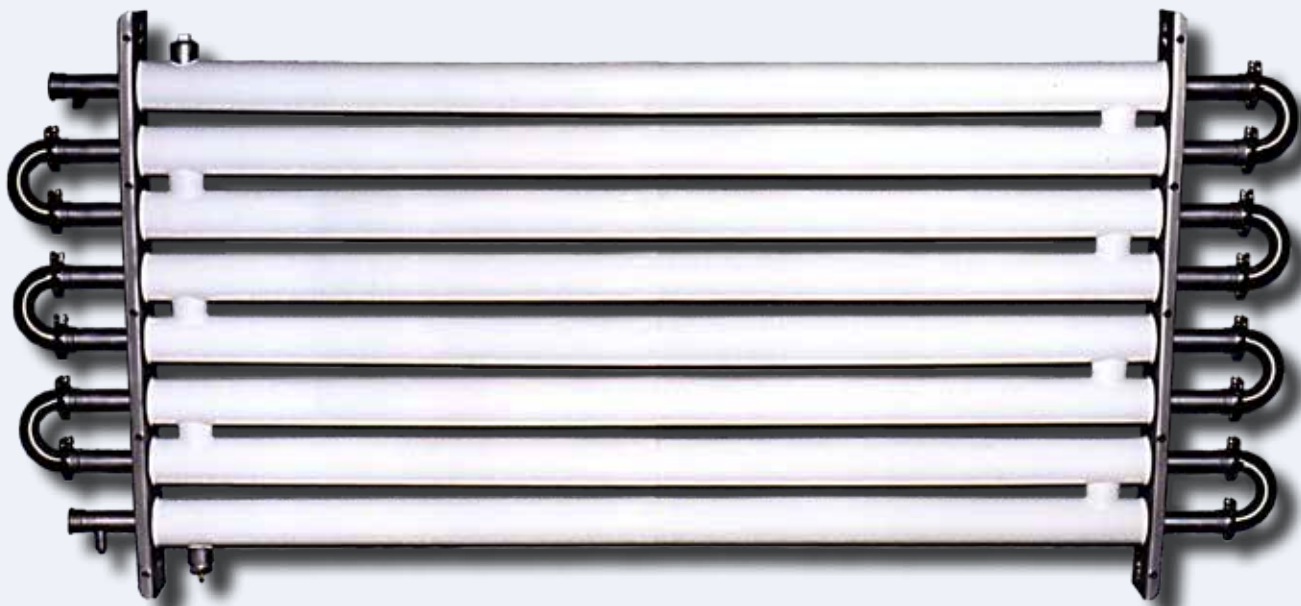


Lowest temperatures in the industry without freeze-ups

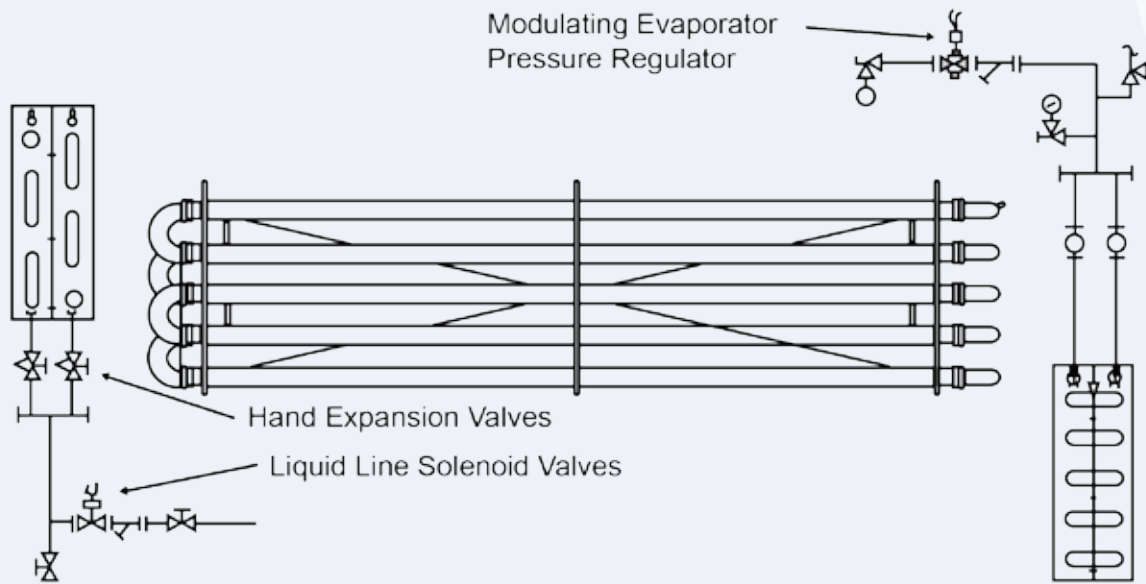
- Fully enclosed system provides protection from outside contamination
- Factory insulated and jacketed ensures maximum efficiency
- Clamp-on return bends allow full access for cleaning and inspection
- Chiller is equipped with easily operated hand expansion/liquid solenoid valve with single stage modulating evaporator pressure regulator
- Simple clean-in-place system makes sanitation easy
- Simple, easy-to-use controls monitor temperatures and settings
- Stainless steel supports allow for easy, secure mounting to floor or ceiling
- ASME stamp certifies heat exchanger meets or exceeds industry standards



Multiple configurations are available for flexible design and applications

Model Number	Tube Length	
IC-S-08TT-D	2.5m	Typical unit lengths are shown. Unit dimensions based on customer requirements. Number of returns / tubes based on load. 7kW to 350kW refrigeration
IC-S-10TT-D	3.1m	
IC-S-16TT-D	4.9m	
IC-S-32TT-D	9.8m	

S - System Type: LRA = Liquid Recirc. Ammonia, GLY = Glycol
TT - Number of Tubes
D - Tube Diameter



Note: All controls and valves shown above are furnished by Morris & Associates. Ammonia piping and fittings are supplied by the purchaser

