

The Morris Water Re-Chiller provides cold water you can count on. Only Morris re-chillers have Severe Temperature Service to prevent tube leaks.



### Reliability

STS (Severe Temperature Service) feature allows damage-free tube expansion and contraction during high temperature cleaning.

Refrigerant injectors eliminate the need for high-maintenance ammonia pumps.

Guaranteed 32.5°F (0.28°C) water temperature leaving re-chiller.

### Efficient Chilling

Precise temperature control via modulating pressure regulator.

Maintains highest water flow in the industry for more water exchange in the chiller.

### Accessible Design

Critical components easily accessible outside the unit.

Removable U-bends facilitate full inspection and cleaning of all surfaces.

### Premium Construction

Food-grade stainless steel frame, jacketing, process tubing, U-bends and tube sheets.

ASME certified manufacturing for highest level of quality.

### Quick Chill Controls

Easy operation via HMI touch-screen controls.

Monitor temperature and pressure, change control points, initiate freeze protection parameters and vary evaporator pressures based on load requirements. Optional remote communications and diagnostics package for 24/7 service and support.

### Proven Performance

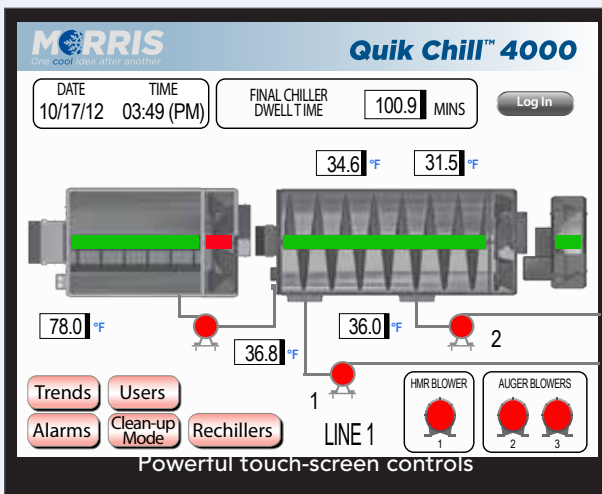
Over 1,100 units in the field, delivering consistently cold water day after day, year after year.

### 24/7 Service & Parts Support

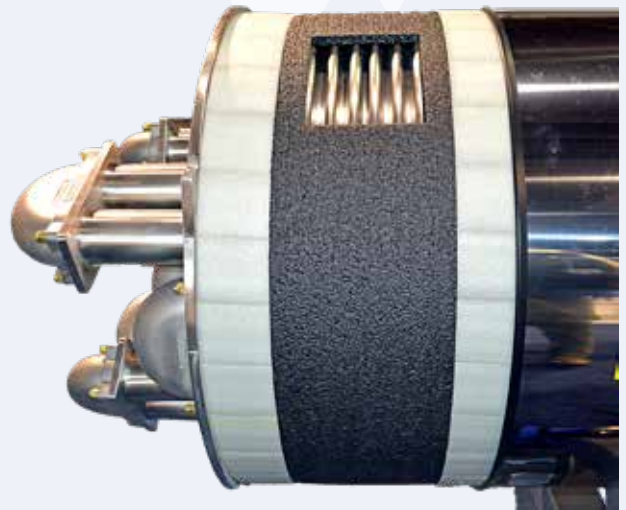
Contact a live Morris representative around the clock for field service or parts support at +1.919.582.9200.



Morris WRC rooftop installation



Powerful touch-screen controls



Severe Temperature Service (STS)

## Specifications

Model	Nominal Refrigeration Capacity <sup>1</sup>				Dimensions - Shipping ft. [m]				Approx. Shipping Weight	
	R-717 (RA Models)		R-507 (R5 Models)		L	W	H (R-717)	H (R-507)	R-717	R-507
	20°F / TR	-6.7°C / kW	20°F / TR	-6.7°C / kW					lb. [kg]	lb. [kg]
WRC-RA/R5-5014	80	282	64	225	16.0 [4.9]	3.3 [1.0]	5.5 [1.7]	6.9 [2.1]	4700 [2132]	6100 [2767]
WRC-RA/R5-5020	120	422	96	338	22.0 [6.7]	3.3 [1.0]	5.5 [1.7]	6.9 [2.1]	6300 [2858]	8300 [3767]
WRC-RA/R5-5026	160	563	128	451	27.0 [8.2]	3.3 [1.0]	5.5 [1.7]	6.9 [2.1]	7900 [3583]	9900 [4490]
WRC-RA/R5-5032	200	704	160	563	34.0 [10.4]	3.3 [1.0]	5.5 [1.7]	6.9 [2.1]	8500 [3856]	10,500 [4763]
WRC-RA/R5-6027	250	880	200	704	29.0 [8.8]	4.1 [1.3]	6.5 [2.0]	7.9 [2.4]	9200 [4173]	12,000 [5489]
WRC-RA/R5-6032	300	1056	240	845	34.5 [10.5]	4.1 [1.3]	6.5 [2.0]	7.9 [2.4]	11,040 [5008]	13,920 [6314]

1. 20°F [-6.7°C] at the evaporator. Estimate a 5 psi [0.034 Mpa] drop to compressor.
2. Dimensions and specifications subject to change. Contact Morris for exact specifications.

Morris & Associates, Inc.  
 803 Morris Drive | Garner, NC 27529  
 Phone: 1.919.582.9200  
[www.morris-associates.com](http://www.morris-associates.com)



\*For patent information, see [morris-associates.com/innovation](http://morris-associates.com/innovation)