

Producing the perfect ice for any industry. Adjustable thickness and a wide variety of capacities to suit individual site needs. Customization is available.



Standard Features

- Ice thickness adjusts from 1/8" to 5/8"
- HMI touchscreen controls provides ease of operation
- 10-Year warranty on evaporator tubes
- Clear-coated, structural aluminum framework
- Stainless steel sump, auger, and discharge chute
- Shell and tube condenser/ receiver on water cooled units
- 8 - 17 ton units feature semi-hermetic compressors
- 25 - 42 ton units feature open-drive industrial reciprocating compressors
- 60 and 72 ton units feature screw compressor units

- Fully assembled electrical panel with starters, programmable controller, safety switches and controls
- Urethane insulated panels and doors with aluminum framework and gas cylinder door hinges

Touch Screen Controls

- Track maintenance by receiving notification at service intervals
- Maintenance service records
- Remote start and stop
- Harvest sequencing
- History page shows trends such as discharge and suction pressure

Popular Industry Uses

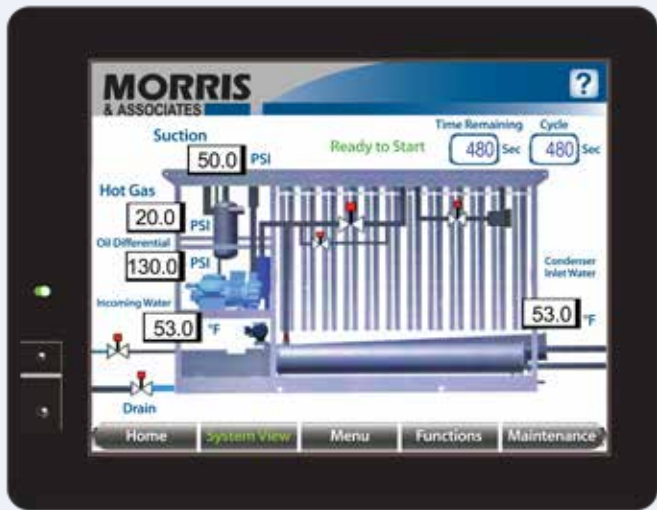
Packaged Ice
Concrete
Poultry
Seafood
Fresh Produce
Pharmaceuticals

Optional features

- Cupronickel condensers
- Winterizing kits

24/7 Service & Parts Support

Contact a live Morris representative around the clock for field service or parts support at +1.919.582.9200.



Specifications

Model Number	Nominal Tons Ice ¹	Motor HP			Approx. Outside Dimensions			Aprox. Shipping Weight ² lb [m]	Ice Maker GPM ³		KWH Use Per Ton ⁴
		Compressor	Conveyor	Water Pump	L	H	H		Make-up	Bleed-off	
NIM-0805-X#-030	8	30	1 1/2	1/3	11'7" [3.5]	2'11" [0.9]	7'8" [2.3]	4,500 [2050]	1.67	0.42	50
NIM-1205-X#-040	13	40	2	1/2	13'9" [4.2]	2'11" [0.9]	7'8" [2.3]	4,650 [2120]	2.50	0.63	52
NIM-1605-X#-060	17	60	2	1/2	17'10" [5.4]	3'2" [1.0]	7'8" [2.3]	5,950 [2700]	3.34	0.84	48
NIM-1608-X#-100	25	100	3	1	21'3" [6.5]	4'11" [1.5]	11'10" [3.6]	8,800 [4000]	5.00	1.25	60
NIM-2008-X#-125	34	125	3	2	24'3" [7.4]	4'11" [1.5]	11'10" [3.6]	10,300 [4700]	6.68	1.67	50
NIM-2608-X#-150	42	150	(2) 3	2	21'0" [6.4]	4'11" [1.5]	12'0" [3.7]	12,420 [5650]	8.35	2.09	48
NIM-3608-X#-200	60	200	(2) 5	(2) 1	25'7" [7.8]	7'6" [2.3]	12'0" [3.7]	23,500 [10,660]	11.67	2.92	55
NIM-4408-X#-250	72	250	(2) 5	(2) 1 1/2	28'7" [8.7]	7'6" [2.3]	12'0" [3.8]	27,500 [12,475]	14.17	3.54	56

Notes:

X Unit Style: P=Packaged, R=Remote

Refrigerant Type: A=Ammonia (R-717), 5=R-507, 9=R-438A

1 Dimensions based on R-438A at 5° F suction temperature and 95°F ambient with 60°F inlet water.

2 Cooling tower and condenser remote.

3 Gallons per 24 hours. Water usage based on 10% blowdown.

4 Does not include cooling tower.

NH3 systems also available.

Morris & Associates, Inc.
 803 Morris Drive | Garner, NC 27529
 Phone: 1.919.582.9200
www.morris-associates.com

